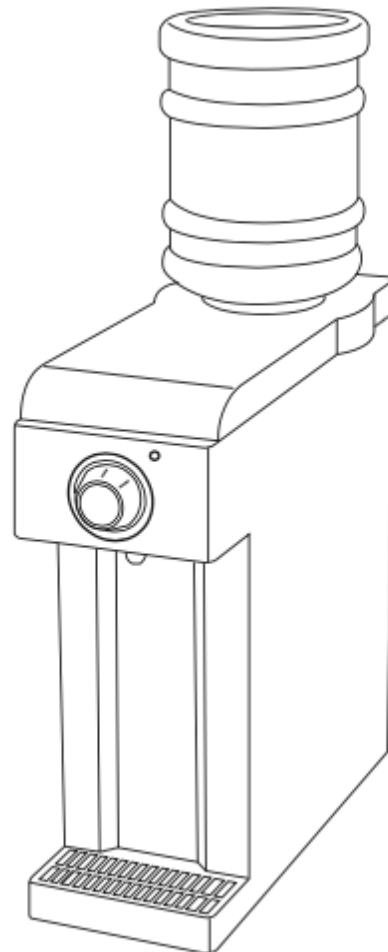


INSTRUCTION MANUAL for the DESKTOP VERSION of HYDROGEN INFUSING DEVICE



inventions
Geneva
*"Awarded in Salon International
Des Inventions de Geneve"*

 **IDROGEN**

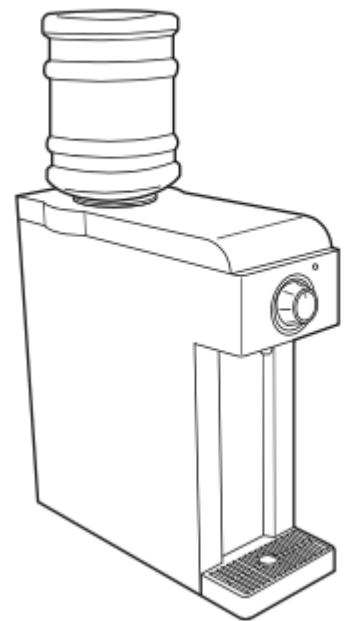
INDEX

Start-up Guide	3
Features	4
Safety Instructions	5
How to Use	6
Maintenance- Annual Cleaning	7
Do's and Don'ts	8
Troubleshooting	9
Product Specification	10
Warranty Policy	11

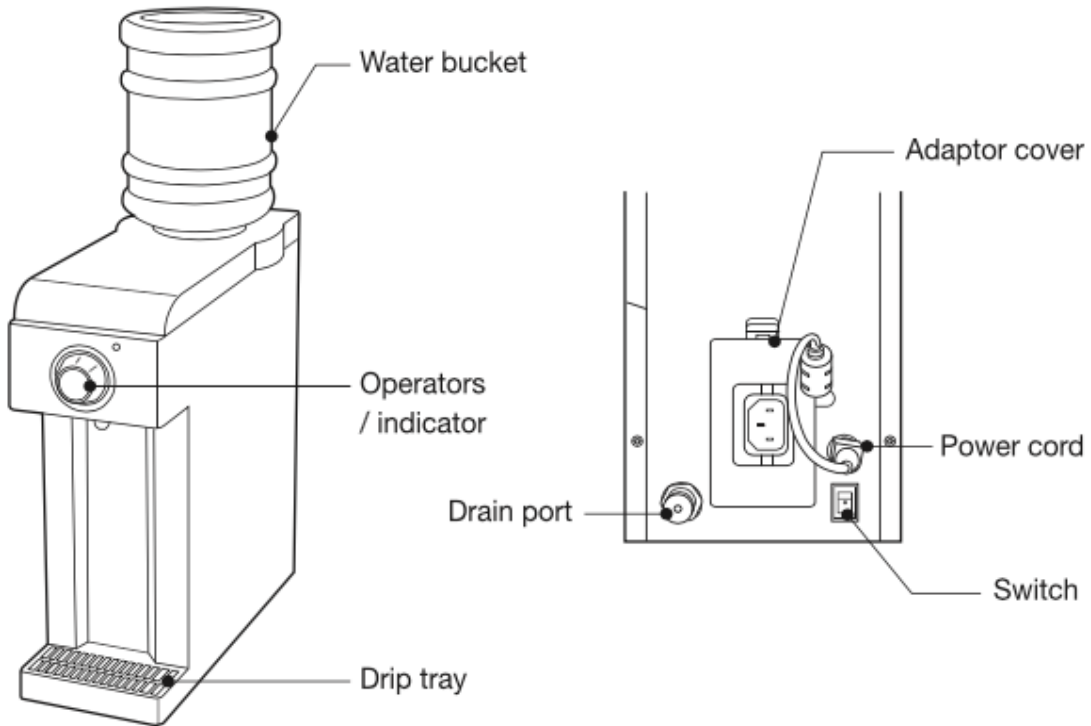


Start-up Guide

1. Place the desktop on a flat and stable surface near a power source.
2. Plug the adaptor's cord into the dispenser's input port and power plug into an electric socket.
3. Rinse and fill the tub with any drinkable water.
4. Turn on both the switch on the power socket as well as the switch located at the rear of the dispenser. Notice the blue lights on the indicator.
5. Turn the valve to the left (anti-clockwise) and collect the dispensed water until the tub is empty. Fill the tub again and repeat this step.
6. Once finished, follow instructions on How to Use.



Features



Dispensing Indicator

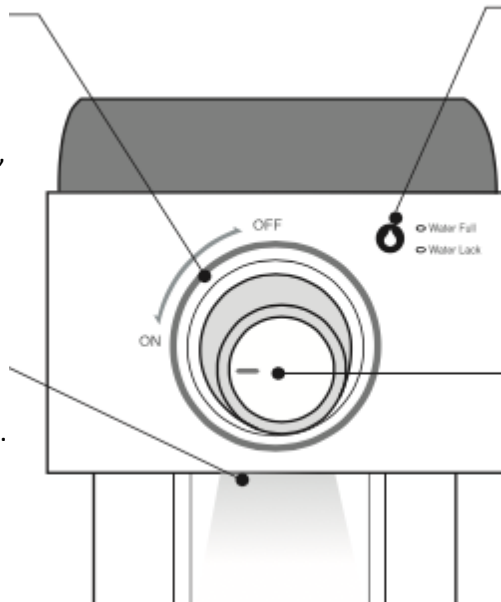
During dispensing, lights will show sequentially in a clockwise manner. If it flickers, refer to Troubleshooting.

Water level Indicator

Blue light: Sufficient water in the reservoir.
Red light: Insufficient water in the reservoir.

Supporting Lighting


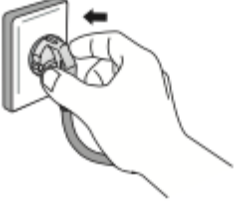


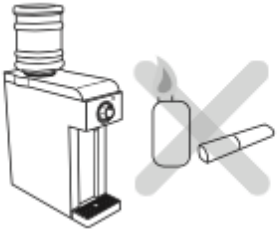

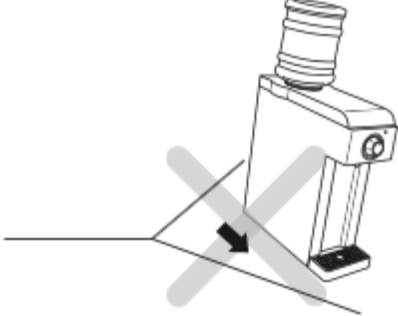
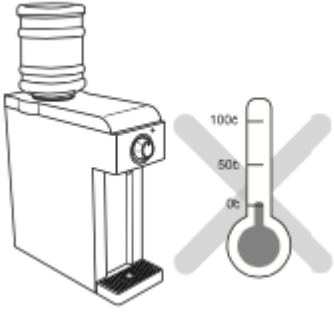
Illuminates the dispensing area.



Valve Knob

Anticlockwise (Left): Water is released.
Clockwise (Right): Valve is locked.

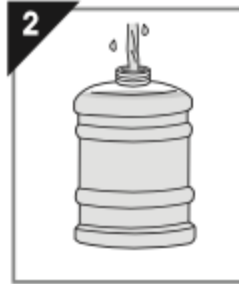
Safety Instructions

 <p>Ensure hands are dry when handling plug.</p>	 <p>Ensure that plug is firmly attached to socket.</p>
 <p>Do not install desktop near flammables or in wet areas</p>	 <p>Do not attempt to disassemble, modify or repair desktop when it is faulty, seek provider for service.</p>
 <p>Do not place candles, cigarettes or other hot items on the desktop.</p>	 <p>Remove the charger by applying force at the power plug, not by tugging the cord.</p>
<p>Do not place any liquids, metal or heavy objects on the desktop.</p>	<p>Remember to switch off and unplug the desktop before cleaning the product.</p>
 <p>Place the product on a flat surface. Do not place on unstable or slanted surface.</p>	 <p>Do not install or place in any extremities of temperature. Recommended maximum 15 minutes of continuous dispensing</p>

How to Use



Remove the cap from the water bucket and rinse thoroughly.



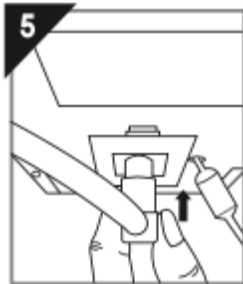
Fill the water bucket with purified, filtered or any drinking water.



Close the inner cap before attaching the cover on the water bucket.



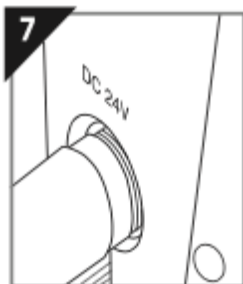
Mount the water bucket onto the water reservoir and then push slightly to release inner cap.



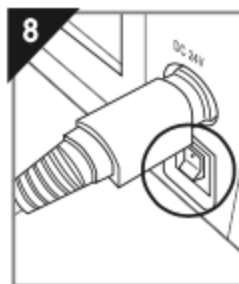
Connect the cord and the adaptor.



Plug into a socket. Ensure the plug is properly connected all the way in.



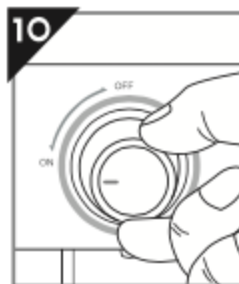
Connect the power supply to the desktop.



Turn the switch on.

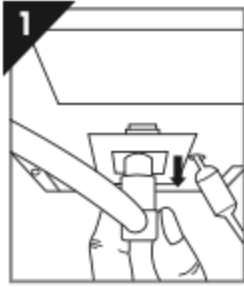


Observe the indicator for water level until it turns blue

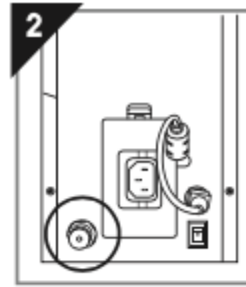


It is now ready for dispensing. To dispense, turn the knob left (anti-clockwise).

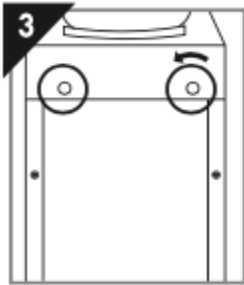
Maintenance- Annual cleaning



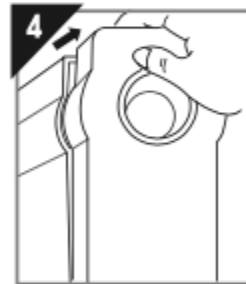
Turn the switches off and pull out the cord and the adaptor. Next, place the desktop on dry and flat surface next to a basin.



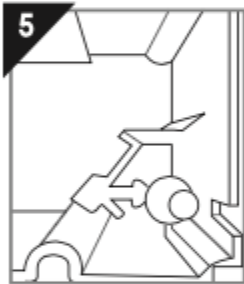
Place the rear of the desktop so that it faces the basin and drain the reservoir by pulling out the plug on the drain port. (Refer p.8)



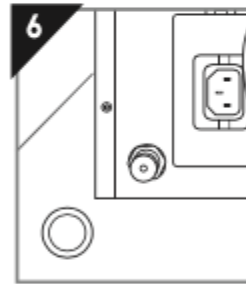
Loosen the bolts in the back by turning them in an anticlockwise manner.



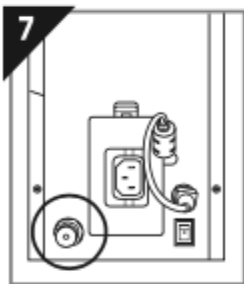
Push the black cover slightly to the front and lift it away from the desktop.



Wipe the inside of the water reservoir with the soft cloth or a sponge. (Do not use detergent)



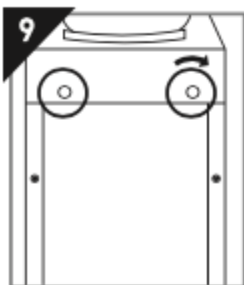
Ensure water is properly released. Rinse the water reservoir several times until satisfactory.



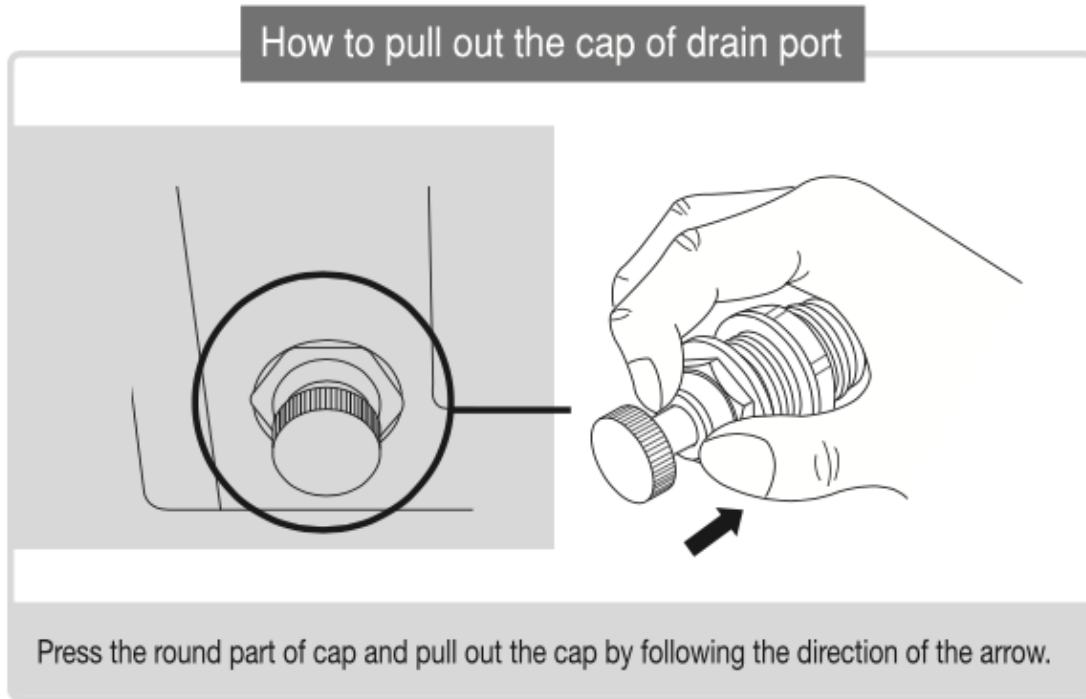
Plug the drain port once done. Reconnect the cord and adaptor.



Reattach the cover.



Tighten the bolts by turning it in a clockwise manner.



Do's and Don'ts

For optimal use of the desktop

Don'ts	Do's
× Do not use teas, milk, liquor, juice and so on.	✓ Use purified, mineral, filtered or any drinkable water.
× Do not overturn an exposed water bucket.	✓ Close inner cap of water bucket before inverting.
× Do not operate continuously for more than 15 minutes.	✓ Leave an interim of 3 minutes if there's continuous dispensing.
× Do not leave valve on when indicator is red.	✓ Turn on valve and refill water if indicator is red.
× Do not put on an uneven or unstable place.	✓ Place on an even and stable place.

Troubleshooting

Condition	Action
The device is not working, or LED is not lighting up	<ul style="list-style-type: none"> • Check if switches are on • Check if plugs are properly connected • Try a different power socket
The water does not come out	<ul style="list-style-type: none"> • Ensure that is sufficient water in reservoir • Compress and gently rock water bucket
The indicators are flickering	<ul style="list-style-type: none"> • Switch off, leave one minute and switch on again.
The water level indicator is red	<ul style="list-style-type: none"> • Refill the water bucket.
There is abnormal taste in water	<ul style="list-style-type: none"> • Follow instructions on Maintenance-Annual Cleaning • Use drinking water
There is burning smell	<ul style="list-style-type: none"> • Stop immediately and contact provider

If the condition is not mentioned or all measures are taken and the device still does not work, please contact use by emailing to h2@idrogen.my

Or message our Facebook  idrogen.my

Or call: +603-7651 7949 or +6011-27254280

Product Specification

Product	IDROGEN-Hydrogen Infusing Device
Model	HHW- 14
Size	148 x 360 x 360 (mm)
Weight	4.5kg
Capacity of water reservoir	About 1 litre
Working Pressure	1-5 kgf/cm ²
Working Temperature	4°C-35°C
Input Power	DC 24V/5A
Power consumption	About 110W
Stand-by power	7W
Dissolved hydrogen density	1.2-1.6ppm

Warranty

Product Name	IDROGEN-Hydrogen Infusing Device	MODEL	HHW-14
Serial No.			
Customer's Name		Contact No.	
Address			
Seller		Contact No.	
Address			
Purchase Date			

1. Fill in details when product is purchased
2. Service is free of charge during warranty period
3. Bring evidence of purchase and warranty card to receive service
4. Fill in the details in <http://tinyurl.com/IdrogenWarranty>

Warranty Policy

A. Provisions of Warranty on Hydrogen Level (H2 ppm)

H2 Level (Minimum)* : **1.2 ppm (5 years from date of purchase)**

* Based on standard test protocol using TRUSTLEX ENH-1000 on EVIAN water (500ml)

B. Recertification

On the FIRST, SECOND, THIRD, FOURTH anniversary of purchase date, owner may **at his own cost** send unit to IDROGEN Sdn Bhd to certify minimum H2 production level. A certificate of compliance will be issued to the owner at no charge.

Note: If a home visit is requested, a home visit deployment fee will be charged to the customer.

C. Optional Recertification

Additional requests for recertification may be requested. Such requests are subject to an administration charge.

D. Warranty Exclusion

This Warranty does not cover the following and the customer will be required to pay repair charge, even for defects occurring within the Warranty period referred to above.

- (a) Any defect that occurs due to mishandling (such as an operation performed that is not mentioned in the Instruction Manual).
- (b) Any defect that occurs due to repair, modification, cleaning, etc. performed by anyone other than IDROGEN or an IDROGEN authorized representative.
- (c) Any defect or damage that occurs due to transport, a fall, shock, etc. after purchase of the product.
- (d) Any defect or damage that occurs due to fire, earthquake, flood damage, thunderbolt, other natural disasters, environmental pollution and irregular voltage sources.
- (e) Any defect that occurs due to careless or improper storage (such as keeping the product under conditions of high temperature and humidity, improper maintenance, etc.
- (f) Any defect that occurs due to **AC/DC adapter** after TWO YEARS of purchase.
- (g) Any defect that occurs due to sand, mud, etc. entering the inside of the product casing.
- (h) When the Guarantee Certificate is not returned with the product.
- (i) When any alterations whatsoever are made to the Warranty Certificate regarding the year, month and date of purchase, the customer's name, the dealer's name, and the serial number.
- (j) When proof of purchase is not presented with this Warranty Certificate.



idrogen.my
h2@idrogen.my